



# Roxtec ComShelt™

Solution d'étanchéité fournie en kit pour shelters et coffrets de télécommunications

Le ComShelt™ Roxtec est une solution d'étanchéité pour des câbles et des tuyaux de différentes tailles. Le cadre léger, en composite, avec l'unité de compression intégrée est conçu pour être utilisé dans des shelters et des coffrets de télécommunications. Le produit est fourni sous forme de kits prêts à l'emploi incluant tous les composants nécessaires.



- Léger
- Surface optimisée
- Fournit une capacité de réserve intégrée

## Caractéristiques du produit



IP/UL NEMA

## Structure d'installation



Armoires et coffrets

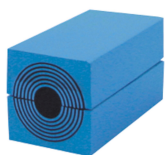
## Classements et certificats

### Étanchéité

- IP 55

## Éléments d'étanchéité

### Éléments d'étanchéité



Module RM avec Multidiameter™



Module de compensation plein RM



Gel d'assemblage Roxtec

Pour plus d'informations, veuillez consulter [roxtec.com](https://www.roxtec.com).



## Kits de passage préconfigurés

mm/kg



COMSHELT L/6



COMSHELT L/18



COMSHELT S/12

Titre	Configuration	Dimensions externes WxHxD	Dimensions d'ouverture w x h	Poids	N° art.
COMSHELT L/6	6x (24.0-54.0)	305 x 422 x 100	190(-2) x 310	3.9	CSL0000000006
COMSHELT L/18	6x (3.5-16.5), 12x (9.5-32.5)	305 x 422 x 100	190(-2) x 310	3.9	CSL0000000018
COMSHELT S/12	6x (3.5-16.5), 6x (9.5-32.5)	305 x 342 x 100	190(-2) x 230	3.6	CSS0000000012
COMSHELT S/30	30x (3.5-16.5)	305 x 342 x 100	190(-2) x 230	3.8	CSS0000000030

The product information provided by Roxtec does not release the purchaser of the Roxtec system, or part thereof, from the obligation to independently determine the suitability of the products for the intended process, installation and/or use.

Roxtec gives no guarantee for the Roxtec system or any part thereof and assumes no liability for any loss or damage whatsoever, whether direct, indirect, consequential, loss of profit or otherwise, occurred or caused by the Roxtec systems or installations containing components not manufactured by an authorized manufacturer and/or occurred or caused by the use of the Roxtec system in a manner or for an application other than for which the Roxtec system was designed or intended.

Roxtec expressly excludes any implied warranties of merchantability and fitness for a particular purpose and all other express or implied representations and warranties provided by statute or common law. User determines suitability of the Roxtec system for intended use and assumes all risk and liability in connection therewith. In no event shall Roxtec be liable for indirect, consequential, punitive, special, exemplary or incidental damages or losses.

The Roxtec products are offered and sold in accordance with the conditions of the Roxtec General Terms of Sales. The latest version of the Roxtec General Terms of Sales can be downloaded from <https://www.roxtec.com/en/about-us/about-roxtec/general-terms-of-sales/>

We reserve the right to make changes to the product and technical information without further notice. Any errors in print or entry are no claims for indemnity. The content of this publication is the property of Roxtec International AB and is protected by copyright.

This document was generated on: 2024-04-03